



Executive Summary

Topic: Kitsap County Division of Aging and Long-Term Care

2025 Annual Report – overview of population shifts, services, key metric, increased funding (effective July 1, 2025), and new staffing requests

Meeting Date: June 11, 2025

Time Required: 10:00- 11:00am

Attendees: Doug Washburn, Kitsap County Human Services Director

Stacey Smith, Division of Aging Administrator

Tawnya Weintraub, Division of Aging Planner & Contracts

Dana Gargus, Division of Aging Long-Term Care Regional Ombudsman

Action Requested At This Meeting:

Kitsap Division of Aging and Long-Term Care will provide an overview of 2025 population shifts, services, key metric, increased funding, and new staffing requests. The Division Administrator will provide the overview.

Issue:

Annual overview of programs, services, trends, increased 100% grant revenue funding and new staff position requests for Aging & Long-Term Care.

The presentation will highlight areas of significant progress, increased grant revenue, federal funding threats and request support for new positions.

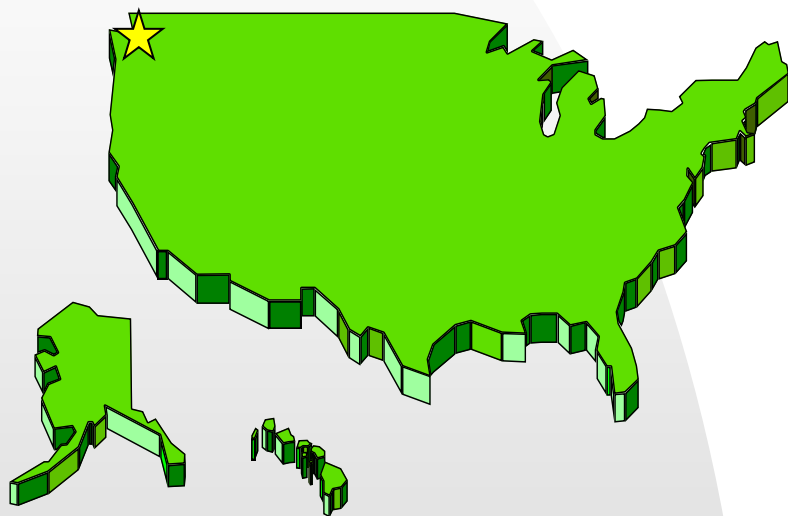
Attachment:

1. 2025 Aging Annual Report pdf



Kitsap County Human Services Department

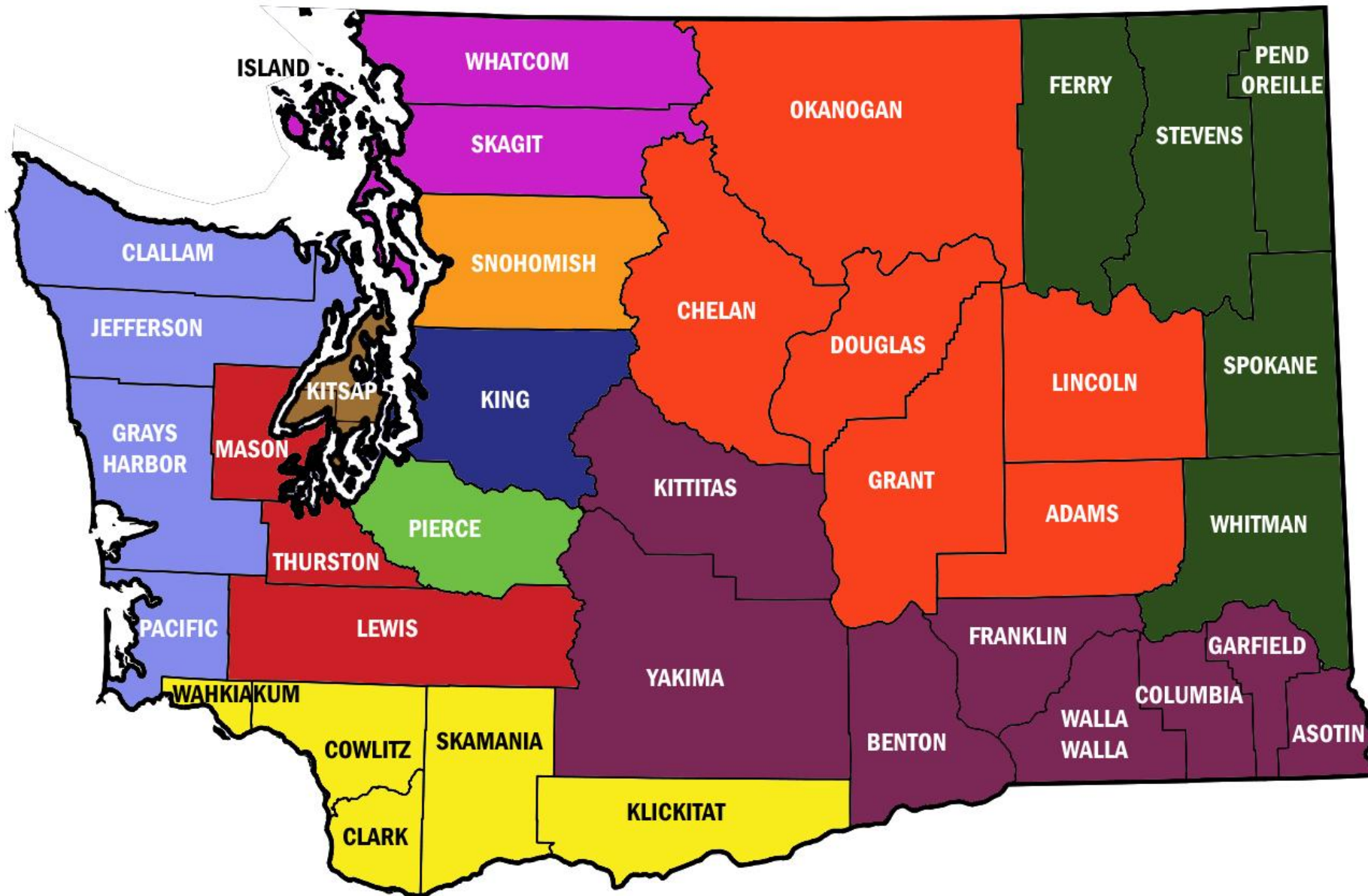
Aging & Long-Term Care



Board of County Commissioners

2025 Annual Report

Washington Association of Area Agencies on Aging



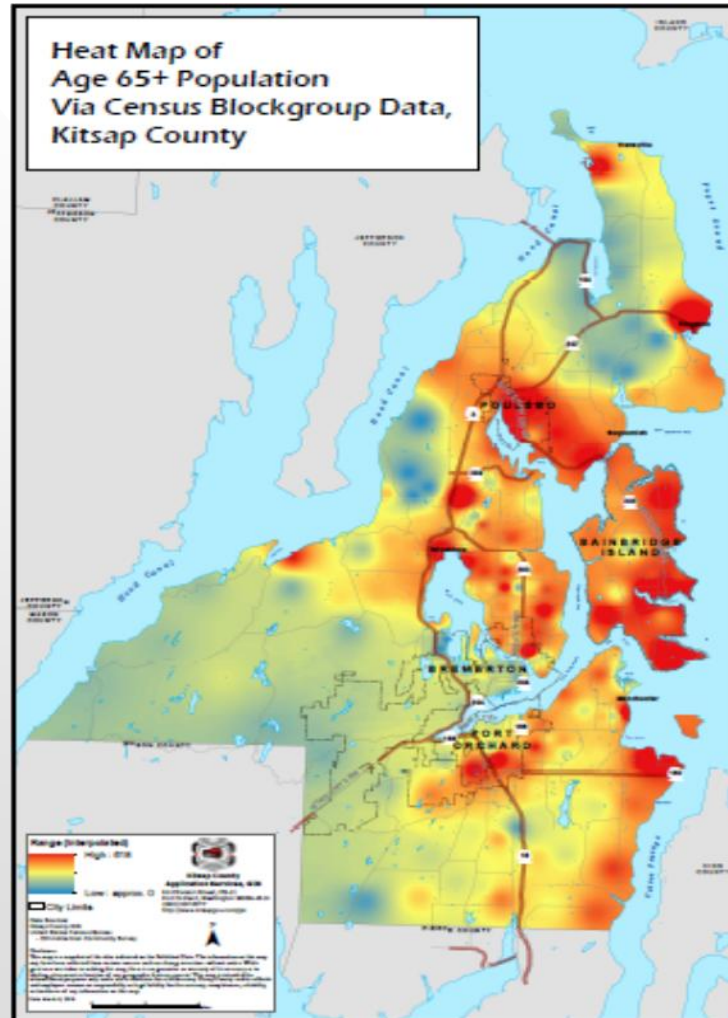
	Olympic Area Agency on Aging (PSA #1)
	Northwest Regional Council (PSA #2)
	Snohomish County Aging & Disability Services Division (PSA #3)
	Aging & Disability Services—Seattle-King County (PSA #4)
	Pierce County Aging and Disability Resources (PSA #5)
	Lewis/Mason/Thurston Area Agency on Aging (PSA #6)
	Area Agency on Aging & Disabilities of Southwest WA (PSA #7)
	Aging & Adult Care of Central WA (PSA #8)
	Southeast WA Aging & Long Term Care (PSA #9)
	Yakama Nation Area Agency on Aging (PSA #10)
	Aging & Long Term Care of Eastern WA (PSA #11)
	Colville Indian Area Agency on Aging (PSA #12)
	Kitsap County Division of Aging & Long Term Care (PSA #13)



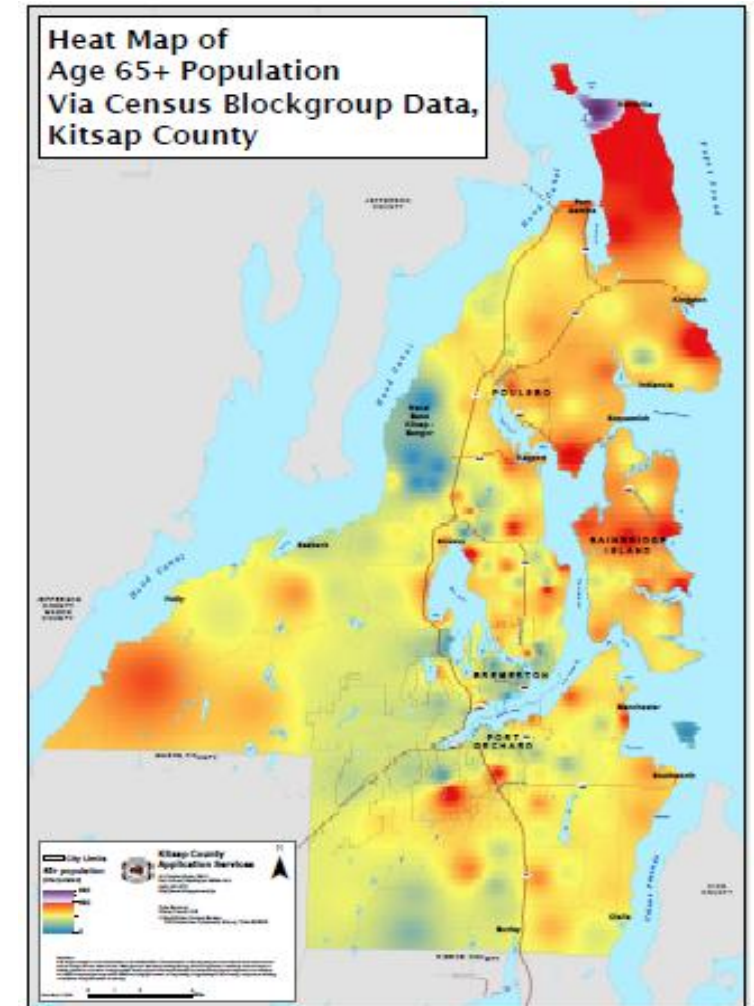


Kitsap Population Map

2015 vs. 2025



+65 years: 37,000



+65 years: 51,500

Overview of Services to Kitsap County



Information & Assistance

Phone, In-person, Web



Senior Nutrition

- * Home Delivered Meals
- * Community Dining Sites
- * Senior Farmers Market

*** NEW Senior Nutrition Food Bank Services**



Caregiver Support



Legal Assistance



Kinship

- * Kinship Caregiver Support
- * Kinship Navigator



Care Transitions (Hospital Discharges)



Case Management Programs

- * In-Home, Long-Term Care
- * Medicaid Alternative Care & Tailored Supports for Older Adults
- * Veteran Directed Care



Partners in Memory Care Services

- * Memory Loss Consultations
- * Community Education



Long Term Care Ombudsman



“Healthy Aging” Initiatives

Medicare Improvements

- * Workshops
- * E-newsletters



COVID-19 Response

expires 9.2025



Outreach & Education Network Adequacy

NEW Benefits Assistance

Grant Funded:100%

Medicaid: CMS

Older Americans Act
\$ (2025 levels):

* ACL=> ACF/ CMS

DSHS (state)

Multi Service Center
(state)

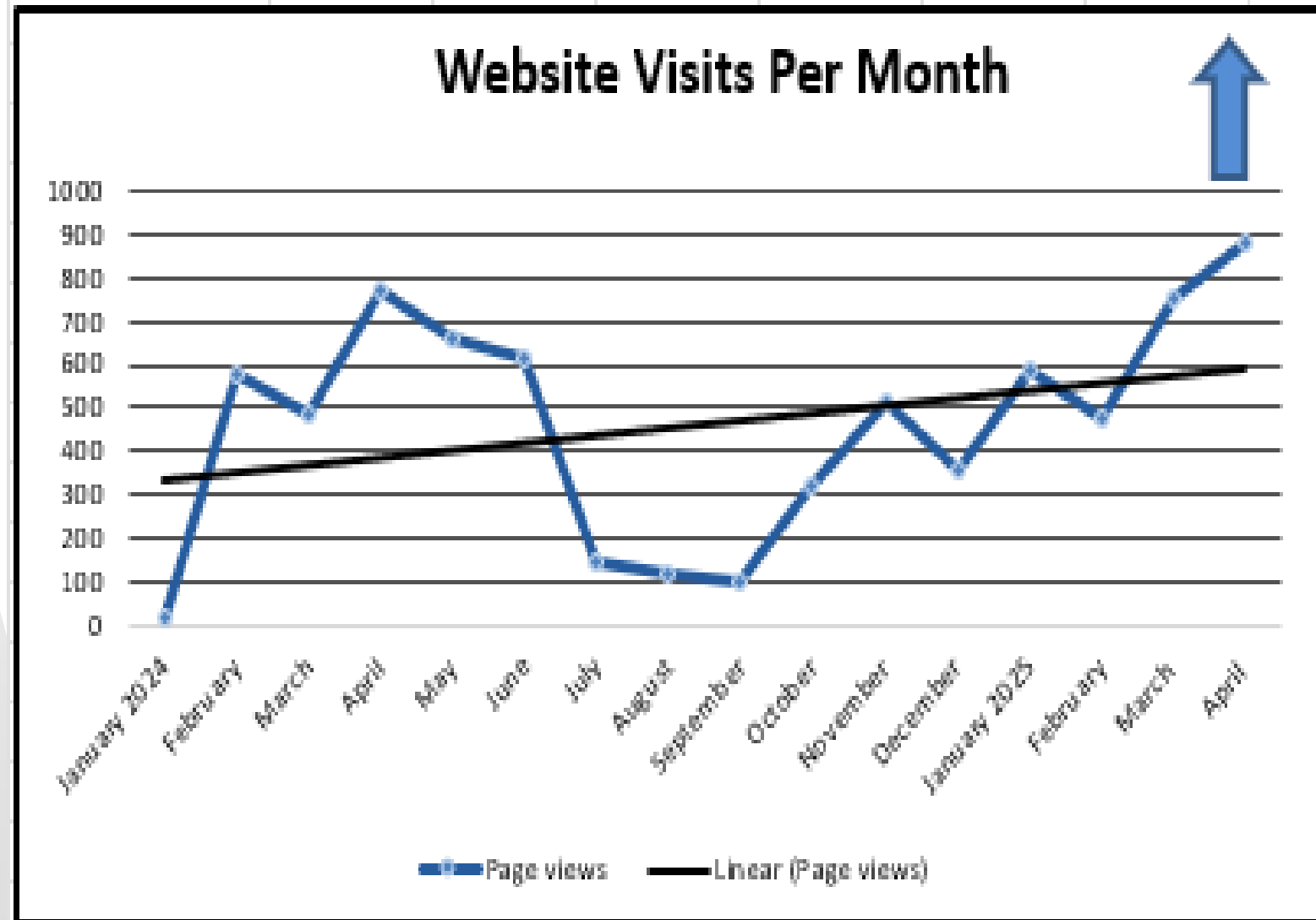
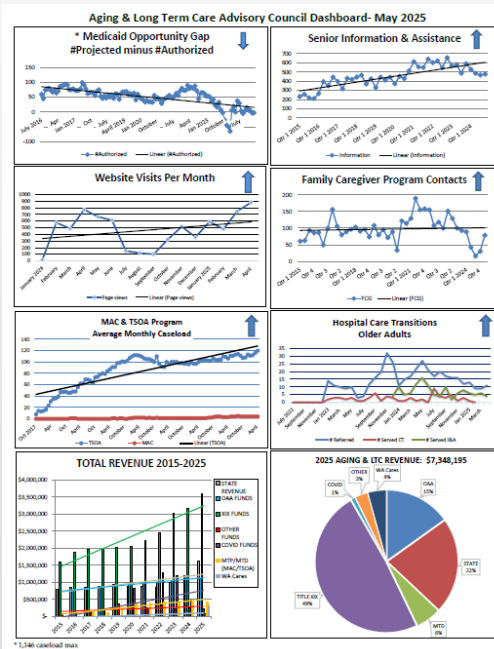


Aging & Long-Term Care

Website Links:

[AgingKitsap.com](https://www.kitsap.gov/hs/Pages/Aging-Kitsap.com)

<https://www.kitsap.gov/hs/Pages/Aging-Landing.aspx>



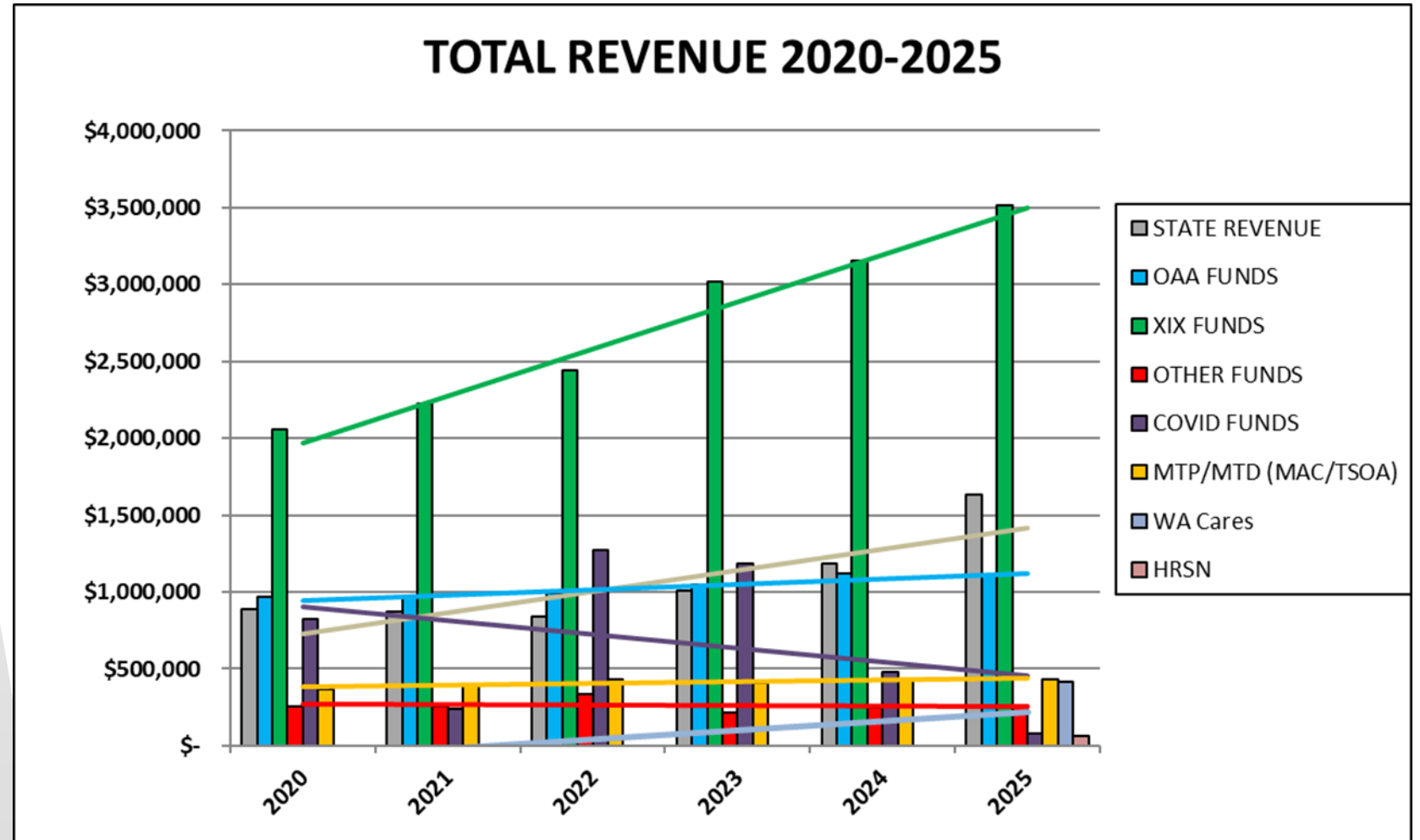


Aging & Long-Term Care

Annual Revenue \$7,511,466

New Funding: July 2025

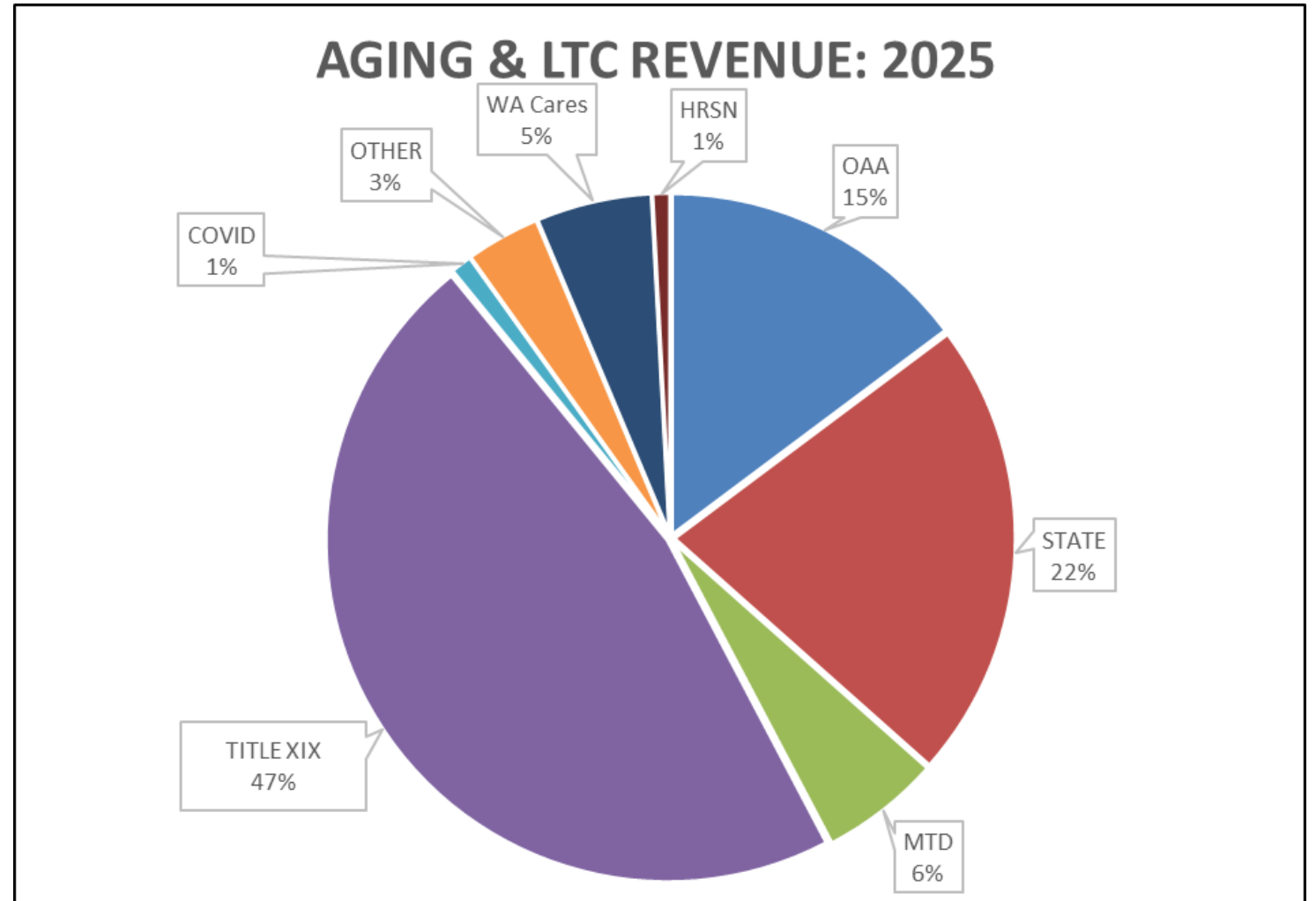
- \$450,000/yr senior nutrition
- \$509,000/yr WA CARES
- Projected:
\$930,000/yr HRSN





Aging & Long-Term Care

Revenue by Source \$7,511,466





Aging & Long-Term Care

New Funding => New Programs & Staff

July 2025:

1. \$509,000 WA Cares hire:
 - * New 2.0 FTEs WA Cares Benefits Assistance Coordinators (+\$226,000)
 - * Sustains 2.0 FTEs WA Cares Outreach & Education; Contracts Coordinator
2. \$450,000 senior nutrition/yr (\$27.9 statewide/ 2 yrs); *100% subcontracted network*
 - * Meals on Wheels Kitsap, Tribes, Kitsap food banks

\$ Projected: ~\$1M/yr Health-Related Social Needs (subcontract; access) 3 years

- Nutrition (Medicaid- all ages)- \$900,000/yr
- Home Adaptations (AC, heaters, air filters, mini frigs, ramps) – \$30,000/yr
- New 1.0 FTE Contracts Specialists



Aging & Long-Term Care

Funding Reductions => Programs

July 2025: Reductions

1. DSHS: 2% rate reduction in Medicaid CM
-\$5,000 per month = no impact
2. MSRC: Long-Term Care Ombudsman program (LTCOP)= no increase
 - * Funding thru March 2026. Plan: Return program to MSRC at contract expiration
 - * \$40,000 Funding Gap: Increased State \$ program funding

FFY 2026 (Federal funding threats)

1. Reconciliation Bill: Medicaid Home & Community-based Services (HCBS)
3. Reconciliation Bill: SNAP



Aging & Long-Term Care

Asks

1. Population grows: Aging-Friendly concepts (universal design)
2. New 2.0 FTEs for September 2025 recruitment; January hire
* 100% grant funded: WA Cares
3. New 1.0 FTE for Health-Related Social Needs
* 100% grant funded: HCLA
4. Ombuds program- \$40,000 fund gap



Thank You!
Your Support Means So Much To So Many



Contact Information

Phone: (360) 337-5700
(800) 562-6418

Website: www.agingkitsap.com

Kitsap County Advisory Council on Aging

